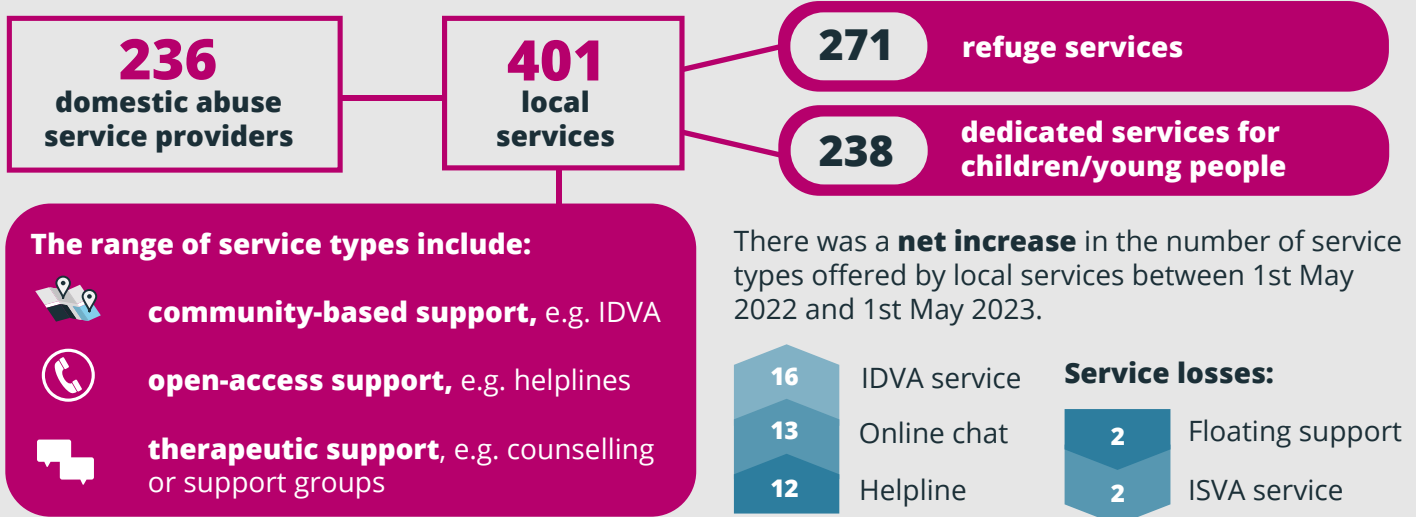


# Key findings from Routes to Support

## 1 Domestic abuse services continue to offer a wide range of service types.

On 1st May 2023, throughout England, there were:



## 2 The number of refuge spaces has increased but there is still shortfall.



\*This **net change** does not give a full picture of change in the sector as it does not account for services opening or closing during the year.

## 3 More needs to be done to make sure refuge spaces are sustainable and accessible to all.



Of vacancies posted on Routes to Support from April 2022 to March 2023:

