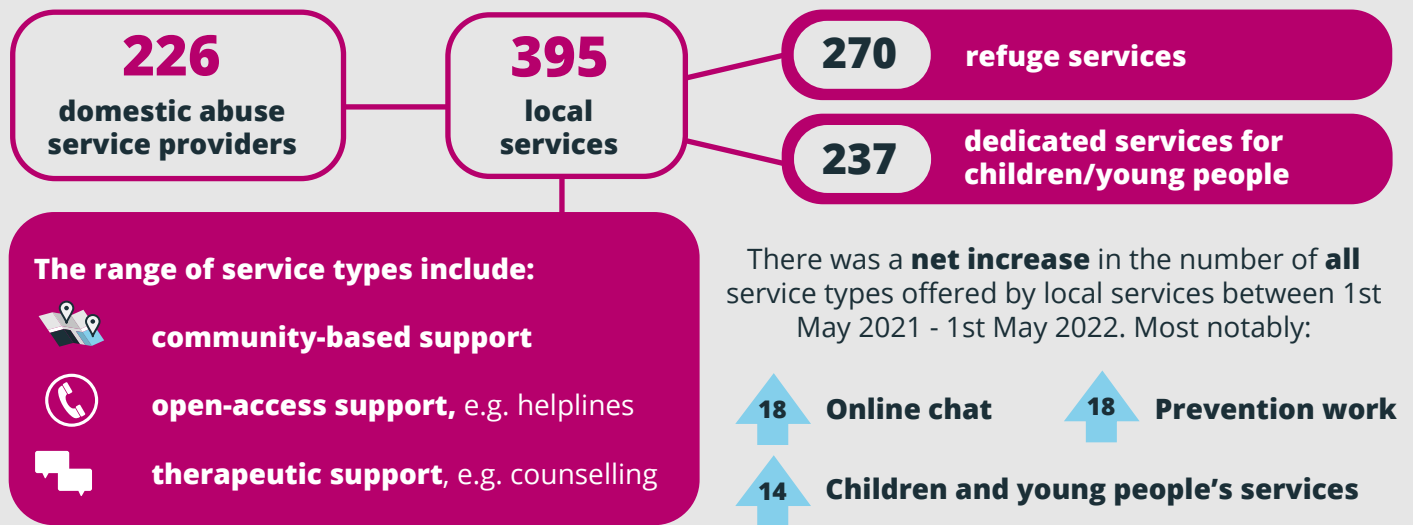
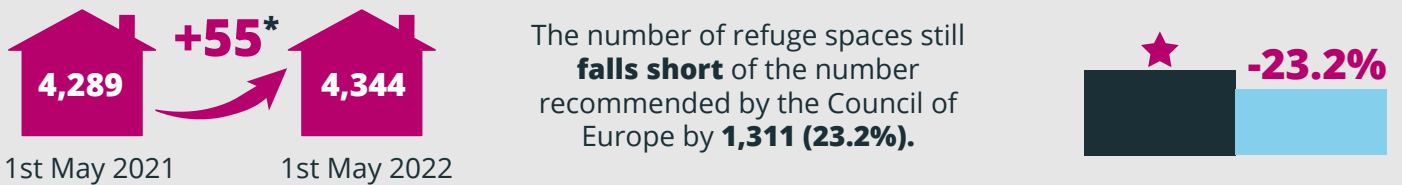


# Key findings from Routes to Support

**1** Domestic abuse services continue to offer a wide range of service types.



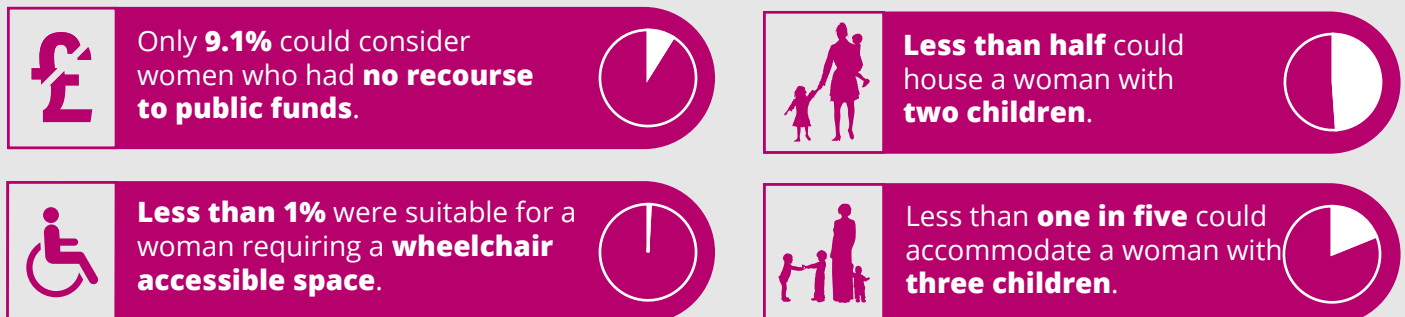
**2** The number of refuge spaces has increased but there is still shortfall.



\*This **net change** does not give a full picture of change in the sector as it does not account for services opening or closing during the year.

**3** More needs to be done to make sure refuge spaces are sustainable and accessible to all.

**Of vacancies posted on Routes to Support from April 2021 to March 2022:**



**4** Domestic abuse services continued to support large numbers of women.

